



CONSTRUCTION • DEMOLITION • FORESTRY • RECYCLING

Serving the Western U.S. since 1953

# High Quality Equipment and Attachments for Any Application



(800) 77-BEJAC

[www.bejac.com](http://www.bejac.com)



# Table of Contents

## Liebherr

Wheel Loaders, Crawler Tractors, Crawler Loaders, Tracked Excavators, Compact Excavators, Wheeled Excavators, Demolition Excavators, Mass Track Excavators, Rail Road Excavators, Tunnel Track Excavators, Mobile Material Handlers, Electric Material Handlers, Timber Material Handlers 3 – 7

## Link-Belt Excavators

X4 Series Excavators, Spin Ace Series Excavators, Forestry—Log Loaders, Processor Carriers, and Road Builders, Material Handlers 8 – 9

## Diamond Z

Horizontal Grinders, Tub Grinders, Enclosed Grinder, Solid Waste Grinder, Metal Recycling 10

## TimberPro

Feller Bunchers 11

## Shuttlewagon

Mobile Railcar Movers 11

## Tigercat

Drive-to-Tree Feller Bunchers, Track Feller Bunchers, Felling Heads, Processors, Wheel Harvesters, Track Harvesters, Harvesting Heads, Skidders, Mulchers, Mulching Heads, Loggers, Loader Forwarders, Forwarders, Loaders, Grapples, Utility Vehicles, Carbonator 12 – 15

## Genesis

Mobile Shears, Concrete Processors, Versi Pro Shear Jaws, Grapples 16 – 17

## Epiroc

Hydraulic Breakers, Drum Cutters 18

## Southstar

Forestry Attachments 19

## Log Max

Forestry Harvesting Heads 19

## Waratah

Forestry Harvesting Heads 19



## About Us



Bejac began in 1953 as a successful underground pipeline contracting business that operated until 1985, when Ron Barlet was hired by his wife's family to liquidate the assets and sell off the remaining equipment. During the liquidation, a contractor approached Ron about renting an excavator on the lot. Since he wasn't experienced in the construction business, Ron was not aware at the time that bare equipment rentals were uncommon within the industry, and he rented the machine to the contractor. From that transaction, one of the largest specialty equipment dealers in the western United States was born.

## Why Bejac?

### Excellent Quality Equipment

Our equipment includes machines from manufacturers known for their quality. We offer the full line of construction, demolition, and material handling equipment from Liebherr, Link-Belt excavators, shears from Genesis, hammers from Epiroc, and material grinders from Diamond Z. We carry every type of forestry equipment imaginable from Tigercat, TimberPro, Log Max, Southstar, and Waratah. Shuttlewagon offers a variety of mobile railcar movers.

### Dependable Service

Bejac helps you maximize productivity with a comprehensive range of services. From preventive maintenance to on-site emergency repairs, Bejac's technicians offer solutions to enhance your machine's performance and minimize equipment downtime. Our technicians are factory trained and certified.

### Parts in Stock

Each of our locations, supported by our central warehouse, stocks our most frequently ordered parts and can access manufacturers' inventories for delivery within 24 hours. Our parts experts will identify which part you need quickly and accurately to assure you avoid downtime with any of your machines. If we do not have your part in stock, delivery can usually be expedited to assure a 24-hour turnaround. We can find the parts you need for all makes and models, including older machines.

### Financing Options

When you're ready to finance your equipment purchase, call us to discuss your options. We have sources for financing both new and used equipment.

*This guide contains information currently available to Bejac Corporation, and because the information contained herein is supplied by various third parties, Bejac cannot be held responsible for errors. All information is subject to change without notice.*



## Wheel Loaders



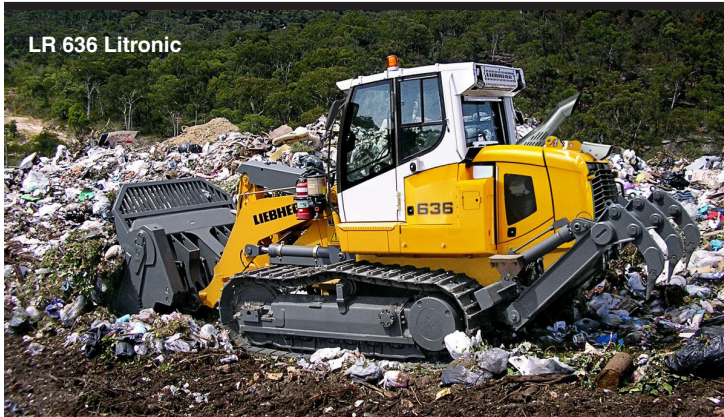
Model	Horsepower	Max Operating Weight	Max Bucket Capacity
L526	134 HP	26,125 lb	3.00 yd <sup>3</sup>
L538	161 HP	30,865 lb	3.70 yd <sup>3</sup>
L546	185 HP	31,965 lb	4.10 yd <sup>3</sup>
L550 XPower	188 HP	39,240 lb	4.70 yd <sup>3</sup>
L556 XPower	221 HP	40,785 lb	5.20 yd <sup>3</sup>
L566 XPower	268 HP	52,910 lb	6.10 yd <sup>3</sup>
L580 XPower	308 HP	63,490 lb	7.50 yd <sup>3</sup>
L586 XPower	349 HP	74,295 lb	11.10 yd <sup>3</sup>

## Crawler Tractors



Model	Horsepower	Max Operating Weight	Blade Capacity
PR 716 Litronic	126 HP	33,510 lb	4.07 yd <sup>3</sup>
PR 726 G8 Litronic	170 HP	45,856 lb	5.06 yd <sup>3</sup>
PR 726 Litronic	163 HP	44,090 lb	5.58 yd <sup>3</sup>
PR 736 G8 Litronic	217 HP	56,218 lb	7.27 yd <sup>3</sup>
PR 736 Litronic	204 HP	54,230 lb	7.27 yd <sup>3</sup>
PR 746 Litronic	252 HP	67,900 lb	9.42 yd <sup>3</sup>
PR 756 Litronic	340 HP	90,720 lb	15.30 yd <sup>3</sup>
PR 766 Litronic	422 HP	119,462 lb	22.23 yd <sup>3</sup>
PR 776 Litronic	768 HP	161,354 lb	28.80 yd <sup>3</sup>

## Crawler Loaders



Model	Horsepower	Max Operating Weight	Blade Capacity
LR 626 Litronic	143 HP	41,006 lb	2.35 yd <sup>3</sup>
LR 636 Litronic	184 HP	50,040 lb	2.35 yd <sup>3</sup>



## Tracked Excavators



Model	Horsepower	Max Operating Weight	Max Dump Height
R 918 Litronic	163 HP	49,935 lb	20' 9"
R 922 Litronic	163 HP	52,360 lb	22' 4"
R 924 Litronic	175 HP	56,440 lb	22' 4"
R 926 Litronic	204 HP	62,720 lb	23' 2"
R 930 Litronic	245 HP	68,890 lb	24' 6"
R 934 Litronic	272 HP	78,600 lb	23' 6"
R 938 Litronic	299 HP	86,090 lb	22' 10"
R 945 Litronic	299 HP	95,900 lb	22' 10"
R 956 Litronic	340 HP	130,955 lb	25' 3"
R 966 Litronic	435 HP	170,970 lb	28' 5"
R 976 Litronic	544 HP	205,250 lb	30' 2"

## Compact Excavators



Model	Horsepower	Max Operating Weight	Max Dump Height
R 914 Compact Litronic	122 HP	36,930 lb	21' 3"
R 920 Compact Litronic	150 HP	46,960 lb	22' 10"
R 926 Compact Litronic	204 HP	60,190 lb	27' 2"
R 936 Compact Litronic	258 HP	84,330 lb	26' 2"

## Wheeled Excavators



Model	Horsepower	Max Operating Weight	Max Dig Depth
A 914 Litronic	143 HP	37,900 lb	20' 10"
A 918 Compact Litronic	156 HP	43,200 lb	22' 10"
A 918 Litronic	163 HP	43,700 lb	24' 9"
A 920 Litronic	175 HP	47,000 lb	23' 7"
A 924 Litronic	190 HP	58,400 lb	27' 5"
A 924 Heavy Lift Litronic	217 HP	60,600 lb	22"



## Demolition Excavators



R 950 Demolition Litronic

Model	Horsepower	Max Operating Weight	Working Height
R 950 Demolition Litronic	299 HP	167,220 lb	90' 3"
R 960 Demolition Litronic	340 HP	215,390 lb	108' 4"

## Mass Track Excavators



R 970  
SME Litronic

Model	Horsepower	Max Operating Weight	Max Dump Height
R 960 SME Litronic	340 HP	135,920 lb	24' 1"
R 970 SME Litronic	449 HP	178,570 lb	26' 5"
R 980 SME Litronic	571 HP	223,110 lb	28' 8"

## Rail Road Excavators



A 922  
Rail Litronic

Model	Horsepower	Max Operating Weight	Max Dump Height
R 914 Rail Litronic	122 HP	43,900 lb	24' 3"
A 922 Rail Litronic	163 HP	51,600 lb	25' 9"

## Tunnel Track Excavators

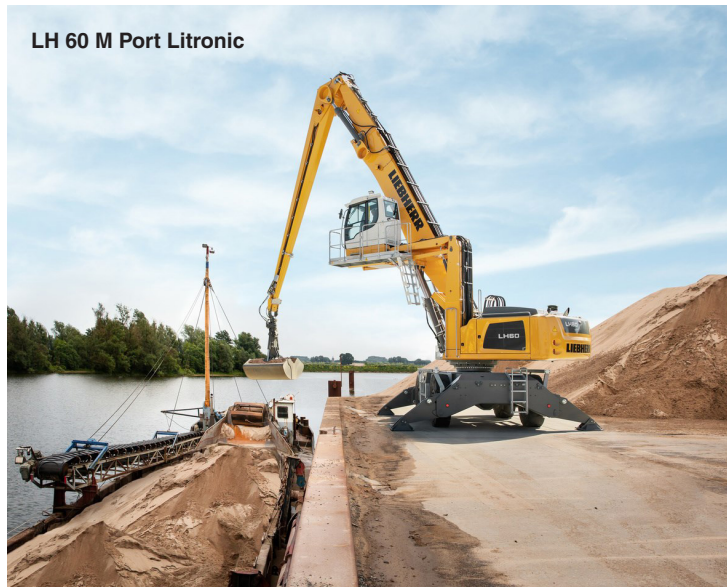


R 950 Tunnel Litronic

Model	Horsepower	Max Operating Weight	Tunnel Height
R 924 Tunnel Litronic	175 HP	76,060 lb	16' 5" – 26' 3"
R 950 Tunnel Litronic	258 HP	99,870 lb	16' 5" – 26' 3"



Mobile Material Handlers



Model	Horsepower	Max Operating Weight	Reach
LH 18 M Industry Litronic	141 HP	39,700 lb	29' 6"
LH 22 M Industry Litronic	143 HP	48,300 lb	36' 1"
LH 24 M Industry Litronic	150 HP	51,100 lb	39' 4"
LH 26 M Industry Litronic	157 HP	54,000 lb	42' 8"
LH 30 M Industry Litronic	190 HP	64,200 lb	45' 11"
LH 35 M Industry Litronic	190 HP	70,300 lb	49' 3"
LH 40 M Industry Litronic	211 HP	85,300 lb	52' 6"
LH 40 M Port Litronic	211 HP	99,869 lb	59'
LH 50 M Industry Litronic	211 HP	90,200 lb	59' 1"
LH 50 M High Rise Industry Litronic	211 HP	103,400 lb	59' 1"
LH 50 M High Rise Port Litronic	211 HP	104,058 lb	62' 4"
LH 60 M Industry Litronic	258 HP	134,500 lb	65' 7"
LH 60 M High Rise Industry Litronic	258 HP	160,100 lb	65' 7"
LH 60 M Port Litronic	255 HP	138,891 lb	75' 5"
LH 60 M High Rise Port Litronic	255 HP	168,213 lb	75' 5"
LH 80 M Industry Litronic	313 HP	168,700 lb	72' 2"
LH 80 M High Rise Industry Litronic	313 HP	202,400 lb	72' 2"
LH 80 M Port Litronic	313 HP	177,252 lb	82'
LH 80 M High Rise Port Litronic	313 HP	208,337 lb	82'
LH 110 M Industry Litronic	408 HP	231,500 lb	78' 9"
LH 110 M High Rise Industry Litronic	408 HP	242,500 lb	78' 9"
LH 110 M Port Litronic	408 HP	242,500 lb	88' 6"
LH 110 M High Rise Port Litronic	408 HP	115,000 lb	88' 6"
LH 150 M Industry Litronic	543 HP	330,700 lb	91' 10"
LH 150 M High Rise Industry Litronic	543 HP	352,750 lb	91' 10"
LH 150 M Port Litronic	543 HP	330,700 lb	98' 5"
LH 150 M High Rise Port Litronic	543 HP	352,700 lb	98' 5"



**Electric Material Handlers**



Model	Electric Motor Rating	Max Operating Weight	Reach
LH 26 M Industry Litronic	90 kW/120 HP	58,400 lb	42' 8"
LH 26 C Industry Litronic	90 kW/120 HP	61,500 lb	42' 8"
LH 110 C Industry Litronic	300 kW/408 HP	242,500 lb	78' 7"
LH 110 C Port Litronic	300 kW/408 HP	253,500 lb	88' 6"
LH 110 C Gantry Port Litronic	300 kW/402 HP	286,601 lb	88' 6"
LH 150 C Industry Litronic	400 kW/536 HP	341,700 lb	91' 10"
LH 150 C High Rise Industry Litronic	400 kW/536 HP	363,763 lb	91' 10"
LH 150 C Port Litronic	400 kW/536 HP	341,720 lb	98' 5"
LH 150 C High Rise Port Litronic	400 kW/536 HP	363,760 lb	98' 5"
LH 150 C Gantry Port Litronic	400 kW/536 HP	407,850 lb	98' 5"
EP 934 C Litronic	160 kW/218 HP	65,255 lb	65' 7"
ER 934 C Litronic	160 kW/218 HP	86,970 lb	55' 10"
ER 934 C High Rise Litronic	160 kW/218 HP	124,780 lb	68' 11"
EP 944 C Litronic	200 kW/272 HP	89,510 lb	72' 2"
ER 944 C Litronic	200 kW/272 HP	118,500 lb	62' 4"
ER 944 C High Rise Litronic	200 kW/272 HP	164,685 lb	78' 9"
EP 954 C Litronic	250 kW/340 HP	113,760 lb	78' 9"
ER 954 C Litronic	250 kW/340 HP	167,990 lb	65' 7"
ER 954 C High Rise Litronic	250 kW/340 HP	213,850 lb	75' 5"

**Timber Material Handlers**



Model	Horsepower	Max Operating Weight	Reach
LH 35 M Timber Litronic	204 HP	69,700 lb	32' 10"
LH 50 M Timber Litronic	231 HP	88,800 lb	36' 1"
LH 60 M Timber Litronic	272 HP	98,800 lb	36' 1"



**X4 Series Excavators**



Model	Horsepower	Max Digging Depth	Operating Weight
130 X4	102 HP	18' 2"	29,100 lb
160 X4	112 HP	19' 11"	38,400 lb
210 X4	160 HP	21' 10"	48,900 lb
210 X4 HD	160 HP	17' 3"	56,900 lb
210 X4 Long Front	160 HP	39' 5"	51,900 lb
250 X4	177 HP	22' 8"	56,900 lb
250 X4 HD	177 HP	17' 3"	68,400 lb
250 X4 Long Front	177 HP	46' 3"	63,600 lb
300 X4	207 HP	23' 4"	67,000 lb
300 X4 HD	207 HP	18' 10"	73,200 lb
350 X4	268 HP	24' 1"	82,400 lb
350 X4 Long Front	268 HP	39' 5"	88,200 lb
490 X4	362 HP	24' 10"	112,900 lb
750 X4	512 HP	27' 7"	158,300 lb

**Spin Ace Series Excavators**



Model	Horsepower	Tail Swing	Operating Weight
75 X3 Spin Ace	54 HP	4' 9"	17,400 lb
80 X3 Spin Ace	54 HP	5' 6"	18,900 lb
145 X4 Spin Ace	102 HP	5' 3"	33,600 lb
245 X4 Spin Ace	160 HP	5' 10"	56,900 lb
355 X4S	205 HP	22' 10"	78,709 lb



**Forestry—Log Loaders, Processor Carriers, and Road Builders**



Model	Operating Weight	Horsepower
3240 TL	75,234 lb	160 HP
3240 PH	73,391 lb	160 HP
3240 RB	74,159 lb	160 HP
3740 TL	85,650 lb	177 HP
3740 PH	78,972 lb	177 HP
3740 RB	79,236 lb	177 HP
4040 TL	90,658 lb	207 HP
4040 PH	86,313 lb	207 HP
4040 RB	86,200 lb	207 HP
4640 TL	105,822 lb	268 HP
4640 RB	102,193 lb	268 HP
5040 TL	111,759 lb	268 HP
5040 RB	110,679 lb	268 HP

**Material Handlers**



Model	Operating Weight	Swing Torque	Horsepower
250 X4	75,000 lb	51,500 lbf-ft	177 HP
250 X4 Scrap Loader	73,200 lb	51,500 lbf-ft	177 HP
380 X4	103,617 lb	110,600 lbf-ft	268 HP
600 X4	126,216 lb	111,000 lbf-ft	362 HP





## Horizontal Grinders



Model	Horsepower	Production Rate	Mill Feed Opening
<b>DZH3000</b>	580 HP	50 – 84 tph	59" X 32"
<b>DZH4000*</b>	765 HP	70 – 120 tph	54.5" X 48"
<b>DZH5500*</b>	1,050 HP	84 – 131 tph	54.5" X 48"
<b>DZH6000*</b>	1,050 HP	84 – 131 tph	64" X 50"
<b>DZH7000*</b>	1,200 HP	120 – 175 tph	68" X 54"

*\*Available in trailer or track configurations.*

## Tub Grinders



Model	Horsepower	Production Rate	Screen Area
<b>1136 Series</b>	440 HP	90 yph	2,145 in <sup>2</sup>
<b>1248 Series</b>	765 HP	315 yph	3,013 in <sup>2</sup>
<b>1352 Series</b>	860 HP	595 yph	3,415 in <sup>2</sup>
<b>1460 Series</b>	1,050 HP	800 yph	3,960 in <sup>2</sup>
<b>8000 Series</b>	1,050 HP	735 yph	4,800 in <sup>2</sup>
<b>1463B Series</b>	1,200 HP	800 yph	6,795 in <sup>2</sup>

## Enclosed Grinder



Model	Horsepower	Production Rate	Screen Area
<b>E6000B</b>	1,050 HP	665 yph	3,960 in <sup>2</sup>

## Solid Waste Grinder



Model	Horsepower	Production Rate	Screen Area
<b>SWG1600</b>	1,200 HP	630 yph	3,960 in <sup>2</sup>

## Metal Recycling



Model	Horsepower	Production Rate
<b>DZ BL650-LS700</b>	440 HP	6 cuts/minute
<b>DZ CCSE800</b>	190 HP	—
<b>DZ CC800</b>	190 HP	—





## Feller Bunchers



Model	Weight	Horsepower
TL725D	61,934 lb	—
TL735D	65,100 lb	—
TL745D	69,280 lb	—
TL755D	75,940 lb	—
TL755D West Coast Edition	78,000 lb	350 HP
TL775D	96,200 lb	365 HP
TL775D Shovel	96,200 lb	365 HP

Cummins L9 Performance Series engine



## Mobile Railcar Movers



### Diesel

Model	Weight	Number of Railcars
SWX315	43,000 lb	Up to 15
SWX420	46,000 lb	Up to 20
SWX525	56,000 lb	Up to 25
NVX5025	60,600 lb	Up to 25
NVX6030	67,000 lb	Up to 30
NVX7035	73,000 lb	Up to 35
NVX8040	101,500 lb	Up to 40
NVX9060	117,000 lb	Up to 60



### Electric

Model	Weight	Max Towing
SWXe-5	4,500 lb	110 tons
SWXe-16	7,500 lb	310 tons
SWXe-25	10,600 lb	525 tons
SWXe-32	13,600 lb	740 tons
SWXe-50	21,000 lb	1,000 tons
SWXe-90	34,000 lb	2,000 tons
SWXe-120	46,000 lb	2,600 tons
SWXe-160	62,000 lb	3,200 tons
NVXe	68,000 lb	4,500 tons



## Drive-to-Tree Feller Bunchers



Model	Engine	Ground Clearance
718G	Tigercat FPT N45 Tier 4f	20"
720G	Tigercat FPT N67 Tier 4f	20"
724G	Tigercat FPT N67 Tier 4f	21"
726G	Tigercat FPT N67 Tier 4f	21"



Model	Engine	Ground Clearance
822D	Tigercat FPT N67 Tier 4f	30"
845E	Tigercat FPT N67 Tier 4f	28"
L845E	Tigercat FPT N67 Tier 4f	27"
855E	Tigercat FPT N67 Tier 4f	28"
L855E	Tigercat FPT N67 Tier 4f	28"
X870D	Tigercat FPT C87 Tier 4f	28"
L870C/LX870C	Cummins QSL9 Tier 3	28"
LX870D	Tigercat FPT C87 Tier 4f	27"

## Felling Heads



Model	Weight	Cut Capacity
5000	4,750 lb	20"
5300	5,850 lb	21.5"
5400	5,930 lb	23"
5500	5,930 lb	23"
5600	5,800 lb	23"
5702	5,930 lb	23"
5702-26	6,500 lb	26"
5185	4,300 lb	33"
5195	5,740 lb	37.5"
1800	5,350 lb	18"
2000	6,040 lb	20"

## Processors



Model	Engine	Ground Clearance
850	Tigercat FPT N67 Tier 4f	27"
875	Tigercat FPT N67 Tier 4f	28"
880D	Tigercat FPT N67 Tier 4f	28"
890	Tigercat FPT N87 Tier 4f	29"
H250D	Tigercat FPT N67 Tier 4f	30"



## Wheel Harvesters



Model	Engine	Ground Clearance
1135	Mercedes 906 170 kW	25"
1165	Tigercat FPT N67 Tier 4f	26"
1185	Tigercat FPT N67 Tier 4f	25"

## Track Harvesters



Model	Engine	Ground Clearance
H822D	Tigercat FPT N67 Tier 4f	28"
LH822D	Tigercat FPT N67 Tier 4f	28"
H845E	Tigercat FPT N67 Tier 4f	28"
LH845E	Tigercat FPT N67 Tier 4f	27"
H855E	Tigercat FPT N67 Tier 4f	28"
LH855E	Tigercat FPT N67 Tier 4f	28"

## Harvesting Heads



Model	Weight	Cut Capacity
568	6,140 lb	28"
570	5,400 lb	27.5"
575	6,200 lb	29"

## Skidders



Model	Engine	Ground Clearance
602	Tigercat FPT N45 Tier 4f	23"
610E	Tigercat FPT N67 Tier 4f	25"
620H	Tigercat FPT N67 Tier 4f	25"
625H	Tigercat FPT N67 Tier 4f	25"
630H	Tigercat FPT N67 Tier 4f	25"
632H	Tigercat FPT N67 Tier 4f	25"
C640H	Tigercat FPT N67 Tier 4f	25"



## Mulchers



Model	Engine	Ground Clearance
<b>M726G</b>	Tigercat FPT C87 Tier 4f	21"
<b>470</b>	Tigercat FPT C87 Tier 4f	18"
<b>480B</b>	Tigercat FPT C13 Tier 4f	22"
<b>760B</b>	Tigercat FPT C13 Tier 4f	27"

## Mulching Heads



Model	Weight	Working Width
<b>4061</b>	8,760 lb	96"

## Loggers



Model	Engine	Ground Clearance
<b>S855E</b>	Tigercat FPT N67 Tier 4f	27"
<b>LS855E</b>	Tigercat FPT N67 Tier 4f	28"
<b>865</b>	Tigercat FPT N67 Tier 4f	27"
<b>875</b>	Tigercat FPT N67 Tier 4f	28"
<b>880D</b>	Tigercat FPT N67 Tier 4f	28"
<b>890</b>	Tigercat FPT C87 Tier 4f	29"

## Loader Forwarders



Model	Weight	Ground Clearance
<b>2160</b>	73,000 lb	27"

## Forwarders



Model	Engine	Ground Clearance
<b>1055C</b>	Tigercat FPT N67 Tier 4f	27"
<b>1075C</b>	Tigercat FPT N67 Tier 4f	28"
<b>1085C</b>	Tigercat FPT N67 Tier 4f	29"



## Loaders



Model	Engine	Ground Clearance
220E	Tigercat FPT N45 Tier 4f	—
234B	Tigercat FPT N45 Tier 4f	—
T234B	Tigercat FPT N45 Tier 4f	27"
250D	Tigercat FPT N67 Tier 4f	30"
T250D	Tigercat FPT N67 Tier 4f	30"
875	Tigercat FPT N67 Tier 4f	28"
880D	Tigercat FPT N67 Tier 4f	28"
890	Tigercat FPT C87 Tier 4f	29"

## Grapples



### Power Clam Grapple Series

## Utility Vehicles



Model	Engine	Weight
T726G	Tigercat FPT C87 Tier 4f	36,100 lb
AD610E	Cummins QSB6.7 Tier 3	31,645 lb
S610E	—	—
S630E	—	—
C640E	Tigercat FPT N67 Tier 4	45,950 lb

## Carbonator



Model	Engine	Ground Clearance
6050	110 kW (148 hp) @ 2,200 rpm Tier 4f	16"



## Mobile Shears

**GXP**



**LXP® with Shear Jaw**



**GXT 665R**



**GRS 70**



Model Series	Weight	Jaw Opening	Jaw Depth	Reach
<b>GXP</b>	5,000 – 54,000 lb	18" – 46"	17" – 48"	5' 10" – 21' 9"
<b>GSS Subsea</b>	13,300 – 41,000 lb	32" – 46"	32" – 48"	—
<b>LXP® with Shear Jaw</b>	5,370 – 17,270 lb	17" – 61"	19" – 39"	8' – 11' 8"

### GXT Series

Model	Weight	Jaw Opening	Jaw Depth	Reach	Min Excavator Boom Mount	Min Excavator Stick Mount
<b>GXT 115</b>	3,100 lb	16"	18"	5'	15,000 lb	25,000 lb
<b>GXT 115R</b>	3,550 lb	16"	17"	7' 8"	18,000 lb	30,000 lb
<b>GXT 225</b>	4,200 lb	18"	20"	5' 8"	25,000 lb	35,000 lb
<b>GXT 225R</b>	4,900 lb	18"	20"	7' 11"	30,000 lb	45,000 lb
<b>GXT 335</b>	6,500 lb	23"	26"	6' 5"	27,000 lb	45,000 lb
<b>GXT 335 R</b>	7,300 lb	23"	26"	8' 11"	37,000 lb	66,000 lb
<b>GXT 445</b>	9,500 lb	28"	28"	7' 2"	40,000 lb	75,000 lb
<b>GXT 445R</b>	11,000 lb	28"	28"	10' 1"	48,000 lb	90,000 lb
<b>GXT 555</b>	11,600 lb	30"	30"	8'	50,000 lb	90,000 lb
<b>GXT 555R</b>	13,100 lb	30"	30"	11'	55,000 lb	110,000 lb
<b>GXT 665</b>	13,200 lb	32"	32"	9'	55,000 lb	110,000 lb
<b>GXT 665R</b>	14,700 lb	32"	32"	12'	68,000 lb	120,000 lb
<b>GXT 775</b>	15,500 lb	35"	37"	9' 8"	68,000 lb	135,000 lb
<b>GXT 775R</b>	17,750 lb	35"	37"	13'	79,000 lb	150,000 lb
<b>GXT 995</b>	18,000 lb	39"	42"	10' 8"	79,000 lb	170,000 lb
<b>GXT 995 R</b>	20,000 lb	39"	42"	14' 2"	100,000 lb	180,000 lb
<b>GXT 1555</b>	23,000 lb	44"	46"	13' 5"	110,000 lb	190,000 lb
<b>GXT 1555R</b>	26,750 lb	44"	46"	17' 2"	145,000 lb	250,000 lb
<b>GXT 2055</b>	32,000 lb	48"	50"	14' 5"	145,000 lb	240,000 lb
<b>GXT 2055R</b>	36,200 lb	48"	50"	17' 7"	180,000 lb	280,000 lb
<b>GXT 2555</b>	50,500 lb	54"	56"	15' 5"	Call for more information	
<b>GXT 2555R</b>	56,500 lb	54"	56"	21' 5"	Call for more information	

### GLS (Genesis Linkage Shear) Series


Model	Weight	Jaw Opening	Jaw Depth	Min Excavator Weight
<b>GLS 50</b>	4,100 – 5,313 lb	21" – 27"	21" – 27"	40,000 – 110,000 lb

### GRS (Genesis Rebar Shear) Series



Model	Weight	Jaw Opening	Jaw Depth	Min Excavator Weight
<b>GRS 70</b>	6,098 – 6,718 lb	26" – 30"	27" – 30"	80,000 – 110,000 lb




## Concrete Processors

GDR	Model	Weight	Jaw Opening	Reach
	<b>Razer Demolition Tool</b>	4,900 – 10,000 lb	31" – 46"	8' – 10' 6"
	<b>GDR</b>	3,450 – 11,000 lb	26" – 48"	6' 4" – 9' 10"
	<b>LXP with Concrete Cracker Jaw</b>	5,370 – 17,720 lb	17" – 61"	8' – 11' 8"
	<b>LXP with Pulverizer Jaw</b>	5,370 – 17,720 lb	17" – 61"	8' – 11' 8"
	<b>GMP C Series Mechanical Pulverizer</b>	4,800 – 7,000 lb	32" – 40"	—
	<b>GMP</b>	5,600 – 7,172 lb	30" – 40"	—

## Versi Pro Shear Jaws

GVP-007 Grapple	07 Series					
Model	Weight	Jaw Opening	Jaw Depth	Reach	Min Skid Steer Weight	
	<b>Shear</b>	1,375 lb	11.5"	11.5"	5' 6"	7,000 lb
	<b>Cracker</b>	1,385 lb	14.5"	13"	5' 8"	7,000 lb
	<b>Grapple</b>	1,420 lb	32"	15.5"	5' 11"	7,000 lb
	<b>Wire Cutter</b>	1,245 lb	10.5"	11.5"	5' 9"	7,000 lb
GVP 15	15 Series					
Model	Weight	Jaw Opening	Jaw Depth	Reach	Min Excavator Weight	
	<b>Shear</b>	3,200 lb	16"	15"	7' 5"	28,000 lb
	<b>Cracker</b>	3,200 lb	25"	25"	8' 3"	28,000 lb

## Grapples

GSG 125	Model	Capacity	Weight	Min Machine Size
	<b>GSG 50</b>	0.5 yd <sup>3</sup>	3,050 lb	20 mt
	<b>GSG 65</b>	0.65 yd <sup>3</sup>	3,150 lb	20 mt
	<b>GSG 75</b>	0.75 yd <sup>3</sup>	3,250 lb	20 mt
	<b>GSG 100</b>	1 yd <sup>3</sup>	3,500 lb	22 mt
	<b>GSG 100 HD</b>	1 yd <sup>3</sup>	4,300 lb	25 mt
	<b>GSG 125</b>	1.25 yd <sup>3</sup>	3,600 lb	22 mt
	<b>GSG 125 HD</b>	1.25 yd <sup>3</sup>	4,500 lb	27 mt
	<b>GSG 150</b>	1.5 yd <sup>3</sup>	4,800 lb	30 mt
	<b>GSG 200</b>	2 yd <sup>3</sup>	5,000 lb	40 mt
	<b>GSG 250</b>	2.5 yd <sup>3</sup>	5,700 lb	45 mt



## Hydraulic Breakers



Model	Min Carrier Weight Class	Service Weight	Max Oil Flow
SB 52	1,550 lb	120 lb	7 gpm
SB 102	2,500 lb	200 lb	9 gpm
SBU 160	5,000 lb	350 lb	13 gpm
SBU 220	6,000 lb	500 lb	20 gpm
SBU 340	10,000 lb	730 lb	26 gpm
SB 452	14,500 lb	970 lb	26 gpm
SB 552	20,000 lb	1,150 lb	30 gpm
MB 750	22,000 lb	1,650 lb	32 gpm
MB 1000	26,500 lb	2,200 lb	34 gpm
MB 1200	33,000 lb	2,650 lb	37 gpm
MB 1500	37,500 lb	3,300 lb	41 gpm
MB 1650	42,000 lb	3,650 lb	45 gpm
HB 2000	48,500 lb	4,400 lb	50 gpm
HB 2500	59,500 lb	5,500 lb	58 gpm
HB 3100	70,500 lb	6,850 lb	71 gpm
HB 3600	77,000 lb	7,950 lb	79 gpm
HB 4100	88,000 lb	9,050 lb	85 gpm
HB 4700	99,000 lb	10,350 lb	95 gpm
HB 5800	128,000 lb	12,800 lb	103 gpm
HB 7000	154,500 lb	15,450 lb	119 gpm
HB 10000	187,500 lb	22,000 lb	140 gpm

## Drum Cutters

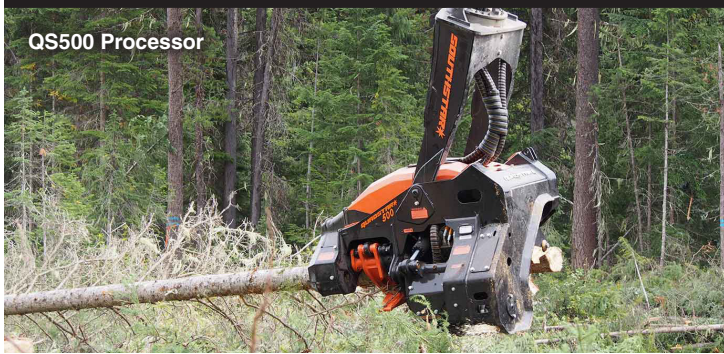


Model	Min Carrier Weight Class	Service Weight	Max Cutting Force
<b>Transverse</b>			
ER 40x	1,100 lb	240 lb	1,918 N
ER 50x	2,200 lb	375 lb	9,308 N
ER 50	2,200 lb	440 lb	8,740 N
ER 100x	6,600 lb	730 lb	11,650 N
ER 100	6,600 lb	770 lb	11,650 N
ER 250x	17,600 lb	1,150 lb	19,200 N
ER 250	17,600 lb	1,260 lb	17,100 N
ER 600	22,000 lb	2,000 lb	25,888 N
ER 650	33,000 lb	2,650 lb	31,272 N
ER 1500x	44,000 lb	4,400 lb	47,942 N
ER 1500xl	44,000 lb	4,600 lb	47,942 N
ER 1700	66,000 lb	5,400 lb	57,161 N
ER 2000x	77,160 lb	5,953 lb	64,537 N
ER 2000	77,160 lb	6,393 lb	64,537 N
ER 3000	110,000 lb	8,800 lb	85,779 N
ER 5500	154,000 lb	15,400 lb	178,785 N
<b>Axial</b>			
ER 100L	6,600 lb	550 lb	16,900 N
ER 250L	17,600 lb	900 lb	26,000 N
ER 400L	26,500 lb	970 lb	52,000 N
ER 450L	26,500 lb	990 lb	46,200 N
ER 600L	33,000 lb	1,460 lb	38,900 N
ERL 700	33,000 lb	1,500 lb	52,000 N
ERL 1100	55,100 lb	1,980 lb	93,600 N
ER 1500L	44,000 lb	3,200 lb	68,800 N
ER 2000L	77,200 lb	3,970 lb	93,000 N





## Forestry Attachments



QS500 Processor

Attachment	Weight	Maximum With with Arms Open
Harvesting Heads	4,279 – 9,974 lb	68" – 83"
Felling Heads	5,710 lb	81"
Grapple Processors	5,921 – 9,526 lb	68" – 116"



## Forestry Attachments



5000D

Attachment	Feeding Diameter	Max Knife Opening
Forestry Harvesting Heads	13" – 21"	18" – 39"



## Forestry Attachments



FL100 Felling Head

	Weight	Max Width with Head Open
Harvester Heads	1,830 – 6,702 lb	45.3" – 79"
Loader Process Heads	6,923 – 7,782 lb	79"

	Weight	Max Width with Arms Open
Felling Head	6,600 lb	95.3"

	Weight	Outreach
Harvester Cranes	4,598 – 7,606 lb	338" – 394"
Forwarder Cranes	2,689 – 4,431 lb	283" – 287"





CONSTRUCTION • DEMOLITION • FORESTRY • RECYCLING

Serving the Western U.S. since 1953

(800) 77-BEJAC

www.bejac.com

LOCATIONS

CALIFORNIA

Los Angeles/Placentia
Corporate Headquarters
569 S. Van Buren St.
Placentia, CA 92870

Sacramento

6934 Florin-Perkins Rd.
Sacramento, CA 95828

Redding/Anderson

5501 East St.
Anderson, CA 96007

San Francisco/Oakland

2266 Central Street #7
Richmond, CA 94801

Visalia

30002 Bradham Dr
Visalia, CA 93291

ARIZONA

Phoenix

5228 N. Tom Murray Ave.
Glendale, AZ 85301

NEVADA

Las Vegas

3838 Octagon Rd.
North Las Vegas, NV 89030

Reno

740 Bennie Ln. Unit A
Reno, NV 89512

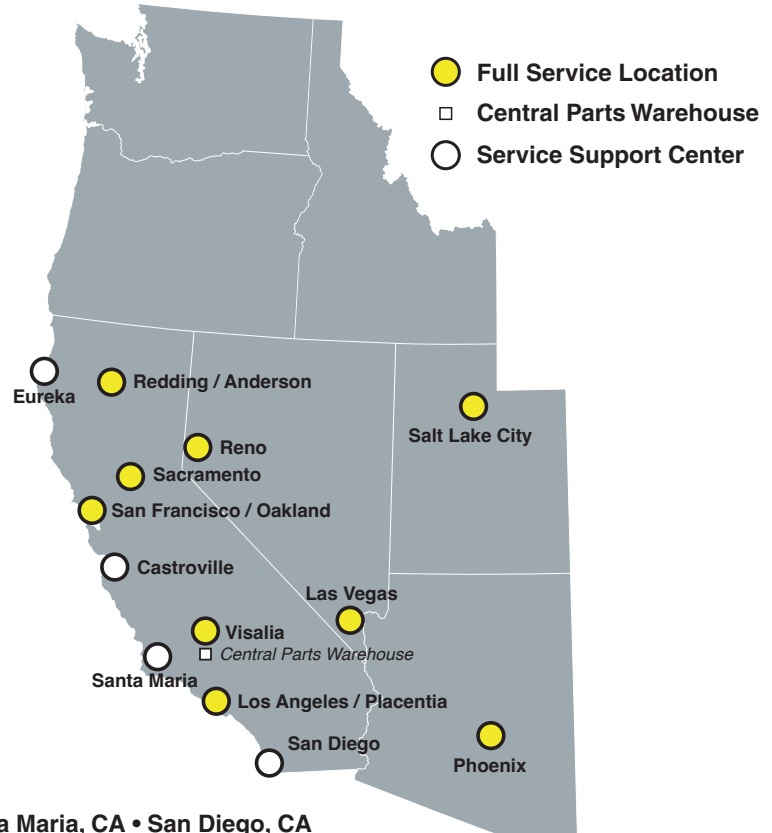
UTAH

Salt Lake City

1206 Beck St. Building B
Salt Lake City, UT 84116

Service Support Centers

Eureka, CA • Castroville, CA • Santa Maria, CA • San Diego, CA



Construction | Composting | Demolition | Forestry | Grinding & Screening | Grinding & Shredding | Recycling & Scrap Handling

EQUIPMENT

- Breakers
Carbonizers
Composters
Concrete plants
Concrete processors
Conveyors
Crawler excavators
Crawler loaders
Crawler tractors
Demolition machines
Electric material handlers
Feller bunchers
Forestry harvesting heads
Grapples
Grinders
Jaw crushers
Loader forwarders
Loggers
Magnets

- Material handlers
Metal recyclers
Mobile railcar movers
Mulchers
Picking stations
Processors
Recycling equipment
Screening equipment
Separators
Shears
Shredders
Skidders
Track harvesters
Track feller bunchers
Wash plants
Wheel loaders
Wheeled excavators
Wheel harvesters

SERVICES

- Financing for equipment, parts, service, rental and accessories purchases
Certified technicians
Extended warranties
Hydraulic hose assemblies
Line boring and welding
Machine inspection and preventive maintenance
Oil and wear analysis
On-site field service
Parts support with a multimillion dollar inventory
Remanufactured engines, transmissions, hydraulics, parts and components
Rental equipment
Training on new equipment purchases
Undercarriage inspections
Used equipment

